

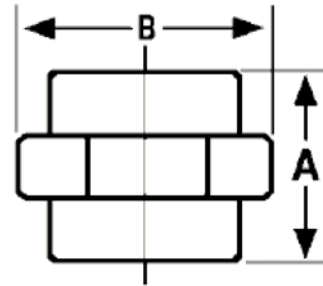
The Best Products, The Best Service...

SERVICE METAL

ONE CALL GETS IT ALL



Socket Weld Union
3000# Forged Steel
Inches / Pounds



Size	A	B	Approximate Weight (in Pounds)
1/8	1.66	1.48	0.34
1/4	1.66	1.48	0.34
3/8	1.83	1.66	0.49
1/2	2.00	1.93	0.68
3/4	2.31	2.38	1.19
1	2.42	2.78	1.68
1 1/4	2.86	3.35	2.54
1 1/2	3.00	3.70	3.33
2	3.50	4.42	5.30
2 1/2	4.25	5.22	8.50
3	4.42	6.15	12.70

**ASTM SA-105, ANSI B16.11*