

JCM INDUSTRIES

P. O. Box 1220, Nash, TX 75569-1220

Phone 800-527-8482 or 903-832-2581

Fax 800-874-9524 or 903-838-6260

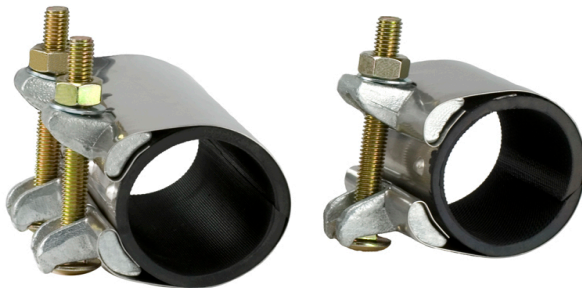
www.jcmindustries.com

Typical Specification

JCM 111 Full-Repair Clamp

All circumferential single band repair clamps 1/2" and larger shall have a minimum material standard of certifiable prime 304 stainless steel band; low profile Ductile Iron Lugs per ASTM A536; lug shall be drop-in design with open receiver slot; replaceable, track head electro-galvanized steel bolt, nut and washer, and a gridded gasket. Clamp shall have separate full circumferential gasket insert with molded stainless steel armor with alignment buttons. Clamps shall be JCM 111 Full-Repair Clamps or approved equal.

JCM 100 Series Universal Clamp Couplings are ANSI/NSF Standard 61, Annex G and ANSI/NSF Standard 372 Certified.



JCM 111 Full-Repair Clamp
6" and 3" Widths



This typical specification, provided by JCM Industries, is a proposed guideline for use by specifying agencies to ensure significant design and material features of this product are included within the agencies' individual specifications.



Effective 01.30.19

JCM INDUSTRIES

P. O. Box 1220, Nash, TX 75569-1220
Phone 800-527-8482 or 903-832-2581
Fax 800-874-9524 or 903-838-6260

www.jcmindustries.com

Material Specification

JCM 111 Full-Repair Clamp

- LUG:** Ductile Iron ASTM A-536.
Optional CF8 Stainless Steel, equal to 304.
- GASKET:** Nitrile Butadiene Rubber (NBR, Buna-N) per ASTM D2000. Molded virgin rubber for natural gas, oil, mild acids, bases, water and sewage. Gasket temperature range -40°F to 180°F (-40°C – 82°C). For applications on high temperatures or chemical pipelines, contact JCM Industries Technical Services.
- BAND:** 18-8 Type 304 Stainless Steel
- HARDWARE:** Electro-galvanized Steel.
Optional Stainless Steel available.

JCM 100 Series Universal Clamp Couplings are ANSI/NSF Standard 61, Annex G and ANSI/NSF Standard 372 Certified.

