

# CATALOG SECTION G

## NUMBERING SYSTEM

### TYPE OF VALVE

- AV = Angle Key Yoke Valve or Service Valve
- B = Ball Valve
- BA = Angle Ball Valve
- BF = Flanged Ball Valve
- BFA = Flanged Angle Ball Valve
- BL = Ball Valve (long)
- BLA = Blow-Off Ball Valve
- BH = 5/8" Ball Valve with a Heavy Tee-Head
- BRW = Reclaimed Water Tee-Head
- FV = Flanged Angle Key Valve
- KV = Angle Key Meter Valve
- SG = Straight Compression Valve
- SV = Straight Key Valve
- UV = Branch Key Valve Assembly
- UAV = Angle Branch Key Valve Assembly
- UVB = Branch Ball Valve Assembly
- UAVB = Angle Branch Ball Valve Assembly
- UVZS = Branch Key Curb Stop Assembly
- Z = Curb Stop (standard)
- ZL = Curb Stop (long)
- ZS = Curb Stop (short)
- ZX = 1/2" Curb Stop (plug style)

### SIZE OF INLETS - OUTLETS

(one end - other end)

- 1 = 1/2" (or 5/8" meter nut)
- 2 = 5/8" (or 5/8" x 3/4" and 3/4" meter nut)
- 3 = 3/4"
- 4 = 1"
- 5 = 1-1/4"
- 6 = 1-1/2"
- 7 = 2"
- 8 = 2-1/2"

### METER NUTS

- 1 = 5/8"
- 2 = 5/8" x 3/4" and 3/4"
- 4 = 1"

### METER FLANGES

- 6 = 1-1/2"
- 7 = 2"

### VALVE SIZE

- 1 = 1/2"
- 2 = 5/8"
- 3 = 3/4"
- 4 = 1"
- 5 = 1-1/4"
- 6 = 1-1/2"
- 7 = 2"

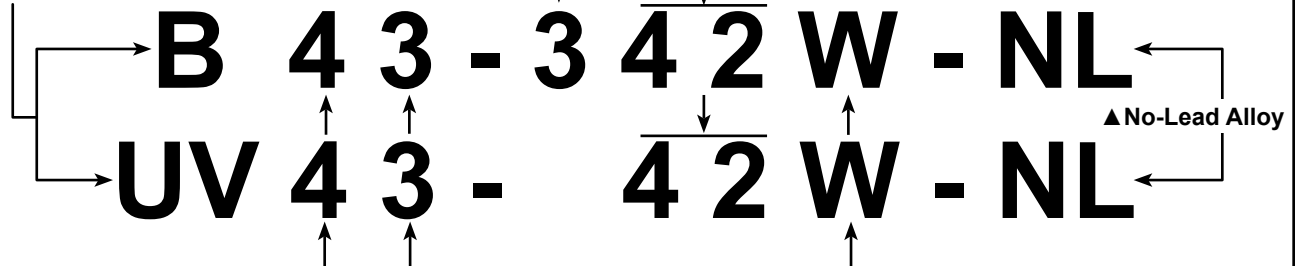
### TYPE OF INLETS - OUTLETS

(one end - other end)

- 1 = Female Iron Pipe Threads
- 2 = Flare Copper Tube Nut
- 3 = Meter Nut or Flange
- 4 = Pack Joint for Plastic or Copper Tube (CTS)
- 5 = Pack Joint for Iron Pipe
- 6 = Pack Joint for PE Pipe
- 7 = Pack Joint for PVC Pipe (Schedule 40 and 80)
- 8 = Male Iron Pipe Threads
- 9 = Yoke Nose
- 0 = Female Copper Tube Nut Thread or 'Special'

### OPTIONAL FEATURES

- D = Test/Drain Valve
- G = Grip Joint (for 3/4" - 2" CTS and 3/4" and 1" PEP)
- IDR7 = Inner Dimension Ratio for 1-1/2" and 2" PE Pipe
- M = Minneapolis Pattern
- NE = New England Threads
- OR = Open Right
- Q = Quick Joint
- R = 360° Tee-head Rotation
- SW = Stop and Waste
- TW-Q = CTS Quick Joint with Tracer Wire Terminal
- U-AWT = Ultra-Tite (components assembled watertight)
- W = Padlock Wing



▲ Ford Meter Box no-lead brass products manufactured from UNS/CDA No. 89833 alloy shall contain no more than 0.25% total lead content by weight. United States federal and state laws allow the use of products manufactured from UNS C83600 85-5-5-5 brass alloy for only non-potable water systems within the United States. The same UNS C83600 85-5-5-5 brass alloy, also referenced as gunmetal or LG2, is specified and used in potable water systems in most other countries.

Remove "-NL" from catalog number to have products manufactured from UNS C83600 85-5-5-5 brass alloy.

Parties responsible for monitoring and maintaining proper water system design must exercise full responsibility in understanding and upholding the full intent and scope of applicable lead laws.

Note: See item listings in catalog section to assure that desired sizes and options are available.

### Please Note:

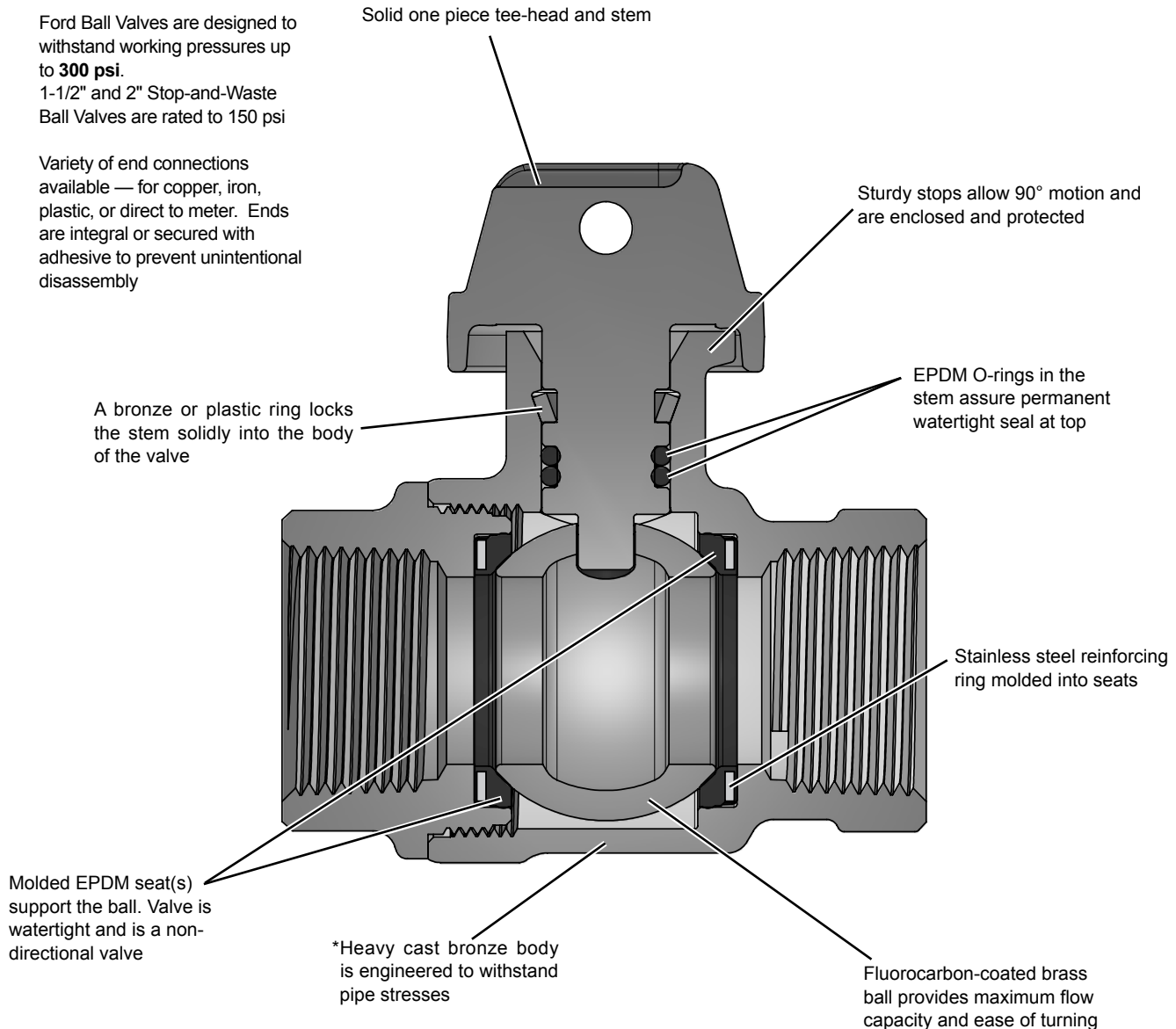
Consult the Ford Meter Box Company, Inc. website ([www.fordmeterbox.com](http://www.fordmeterbox.com)) for the most recent catalog information. The Ford Meter Box Company considers the information in this catalog to be correct at the time of publication. Items and option availability, including specifications, are subject to change without notice. Please verify that your product information is current.

# Information

## Features of the Ford Ball Valve

Ford Ball Valve Curb Stops are ideal for use in water service lines. Watertight in either direction at pressures up to 300 psi, easy turning, nonbinding, and minimum pressure loss — these characteristics are added to superb design, quality, and precise manufacturing.

### Standard Ford Ball Valve



\* All Ford Meter Box brass conforms to AWWA Standard C800 (UNS No. C89833 - no-lead alloy — ASTM B62 and ASTM B584).

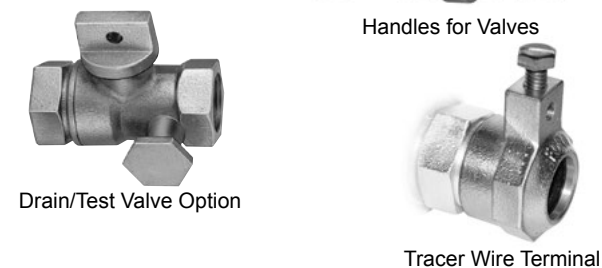
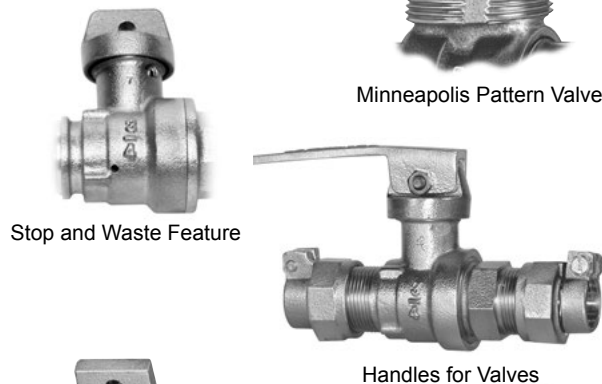
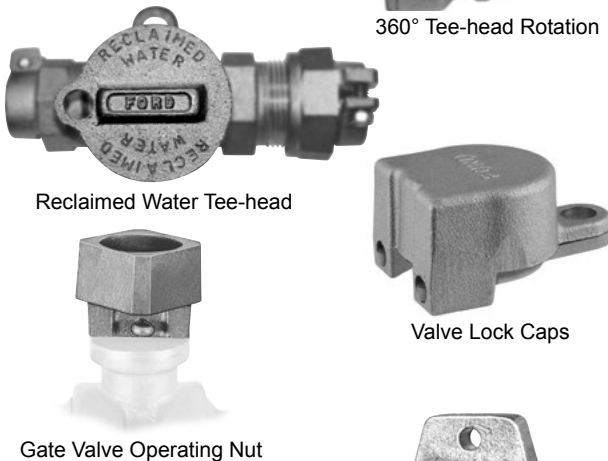
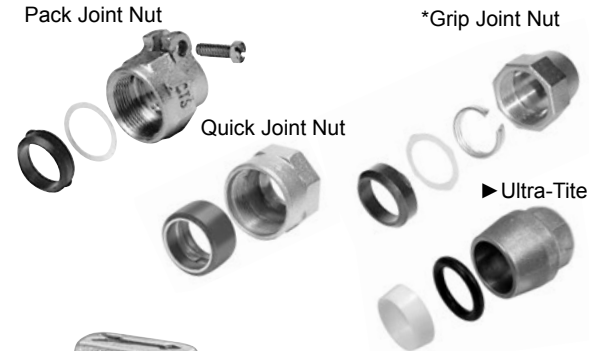
#### PRESSURE REQUIREMENTS

The AWWA Standard C800 specifies normal pressure service line valves shall be suitable for use with water at 100 psi for 1" and smaller sizes, and 80 Psi for 1-1/4" through 2" sizes. Ford Key Style Valves are designed for normal service line pressure conditions. Use Ford Ball Valves for higher pressure requirements.

# Information

## Features of the Ford Ball Valve Options Available

### COMPRESSION OPTIONS



### ALL TYPES OF CONNECTIONS

Ford Curb Stops and Meter Valves are available with a wide variety of connections. Make your selection from compression, flare, female or male style fittings for copper, iron, polyethylene, PVC and lead.

- **Pack Joint** is the standard offering for all compression fittings. Other options may be available. See below for details
- **Grip Joint instead of Pack Joint for CTS** (for all sizes) or **PEP** (3/4" or 1") can be ordered by adding "-G" to the catalog number. Example: B41-333-G-NL
- **Quick Joint** is available for items indicated with a ♦. Add a "-Q" to the catalog number. Example: B41-333-Q-NL
- **Ultra-Tite** is available for items indicated with a ►. Add "-U-AWT" to the catalog number. Example: B44-333-U-AWT-NL

### PADLOCK WINGS

Most valves are available with padlock wings (except for Minneapolis Valve or where noted). Add "W" to catalog number. Example: B11-333W-NL. "W" in a listed catalog number indicates that the valve is available with padlock wings only.

### 360° TEE-HEAD ROTATION

Standard tee-head stops on the body to permit 90° turn *only*. Full 360° tee-head rotation is available. Add "R" to catalog number. Example: B21-333R-NL.

### RECLAIMED WATER BALL VALVE TEE-HEAD

A distinctive tee-head with "Reclaimed Water" lettering for easy identification is available on 3/4" through 2" Ball Valves. Insert "RW" into the catalog number. Example: BRW11-333W-NL. Tee-head sold only with padlock wings.

### VALVE LOCK CAPS

Lock caps are available for 5/8" through 2" Ball Valves and 3/4" Angle Key Valves. See page 38 to order.

### 2" GATE VALVE OPERATING NUT

Adapts tee-head on 1-1/4", 1-1/2" and 2" Ball Valves (listed on pages 6 - 13) for operation with standard gate valve wrenches. See page 38 to order.

### MINNEAPOLIS PATTERN VALVE

Threads are available around the valve body in order to attach Minneapolis style curb boxes. 3/4" and 1" valves have 1-1/2" threads; 1-1/4", 1-1/2" and 2" valves have 2" threads. If an additional size is required other than the sizes listed, please contact the factory for availability.

### STOP-AND-WASTE FEATURE

Stop-and-waste valves allow the downstream service line to drain when in the closed position. This feature is typically used to avoid damage to the service line caused by freezing. Valves available with this option are indicated with an asterisk (\*). For 3/4" and 1" valves, insert "C" and add "SW" to the catalog number. Example: BC11-333SW-NL. (\*\*) For 1-1/2" and 2" valves, add "SW" to the catalog number. Example: B11-666SW-NL.

### HANDLES FOR VALVES

Handles for valves are available. Ordering information and descriptions are found on pages 37 and 38.

### DRAIN/TEST VALVE OPTION

For Ford Ball Service Valves. See page 33.

### TRACER WIRE TERMINAL

Available on 3/4", 1", 1-1/4", 1-1/2" and 2" CTS Quick Joint Nuts, add "-TW-Q" to the catalog number.

# Ford Angle Ball Meter Valves

## Female Iron Pipe Thread Inlet by Meter Swivel Nut Outlet



CATALOG NUMBER	DESCRIPTION			APPROX. WT. LBS.
	VALVE SIZE	SERV. LINE	METER SIZE OUTLET	
BA13-231W-NL	5/8"	3/4"	5/8"	1.2
BA13-232W-NL	5/8"	3/4"	5/8"x3/4" & 3/4"	1.3
▼ BA13-232WW-NL	5/8"	3/4"	5/8"x3/4" & 3/4"	1.4
BA13-331W-NL	3/4"	3/4"	5/8"	1.9
BA13-332W-NL	3/4"	3/4"	5/8"x3/4" & 3/4"	2.0
▼ BA13-332WW-NL	3/4"	3/4"	5/8"x3/4" & 3/4"	2.1
BA13-334W-NL	3/4"	3/4"	1"	2.1
BA13-341W-NL	3/4"	1"	5/8"	2.3
BA13-342W-NL	3/4"	1"	5/8"x3/4" & 3/4"	2.3
BA13-344W-NL	3/4"	1"	1"	2.4
BA13-444W-NL	1"	1"	1"	3.1
▼ BA13-444WW-NL	1"	1"	1"	3.2

▼ Double padlock wings for locking in either "on" or "off" position.

## Flare Copper Inlet by Meter Swivel Nut Outlet

CATALOG NUMBER	DESCRIPTION			APPROX. WT. LBS.
	VALVE SIZE	SERV. LINE	METER SIZE OUTLET	
BA23-231W-NL	5/8"	3/4"	5/8"	1.6
BA23-232W-NL	5/8"	3/4"	5/8"x3/4" & 3/4"	1.7
BA23-241W-NL	5/8"	1"	5/8"	2.0
BA23-242W-NL	5/8"	1"	5/8"x3/4" & 3/4"	2.0
BA23-331W-NL	3/4"	3/4"	5/8"	2.2
BA23-332W-NL	3/4"	3/4"	5/8"x3/4" & 3/4"	2.3
BA23-334W-NL	3/4"	3/4"	1"	2.7
BA23-341W-NL	3/4"	1"	5/8"	2.6
BA23-342W-NL	3/4"	1"	5/8"x3/4" & 3/4"	2.7
BA23-344W-NL	3/4"	1"	1"	2.8
BA23-444W-NL	1"	1"	1"	3.8

## Pack Joint for Copper or Plastic Tubing (CTS) Inlet by Meter Swivel Nut Outlet

CATALOG NUMBER	DESCRIPTION			APPROX. WT. LBS.
	VALVE SIZE	SERV. LINE	METER SIZE OUTLET	
▶♦ BA43-231W-NL	5/8"	3/4"	5/8"	1.5
▶♦ BA43-232W-NL	5/8"	3/4"	5/8"x3/4" & 3/4"	1.6
▶ BA43-241W-NL	5/8"	1"	5/8"	1.6
▶ BA43-242W-NL	5/8"	1"	5/8"x3/4" & 3/4"	1.7
▶ BA43-331W-NL	3/4"	3/4"	5/8"	2.1
♦ BA43-332W-NL	3/4"	3/4"	5/8"x3/4" & 3/4"	2.2
▶♦ BA43-334W-NL	3/4"	3/4"	1"	2.4
▶♦ BA43-341W-NL	3/4"	1"	5/8"	2.4
▶♦ BA43-342W-NL	3/4"	1"	5/8"x3/4" & 3/4"	2.4
▶♦ BA43-344W-NL	3/4"	1"	1"	2.5
▶♦ BA43-444W-NL	1"	1"	1"	3.4

## Pack Joint for Plastic Pipe (PEP) Inlet by Meter Swivel Nut Outlet

CATALOG NUMBER	DESCRIPTION			APPROX. WT. LBS.
	VALVE SIZE	SERV. LINE	METER SIZE OUTLET	
▶ BA63-231W-NL	5/8"	3/4"	5/8"	1.6
▶ BA63-232W-NL	5/8"	3/4"	5/8"x3/4" & 3/4"	1.7
▶♦ BA63-332W-NL	3/4"	3/4"	5/8"x3/4" & 3/4"	2.5
▶♦ BA63-342W-NL	3/4"	1"	5/8"x3/4" & 3/4"	3.0
▶♦ BA63-444W-NL	1"	1"	1"	4.0

## Pack Joint for PVC\*\*\* Inlet by Meter Swivel Nut Outlet

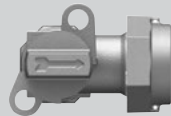
CATALOG NUMBER	DESCRIPTION			APPROX. WT. LBS.
	VALVE SIZE	SERV. LINE	METER SIZE OUTLET	
BA73-232W-NL	5/8"	3/4"	5/8"x3/4" & 3/4"	1.8

\*\*\* Ford Pack Joints for PVC are only recommended for Schedule 40 and Schedule 80 pipe.

### Padlock Wings on Angle Meter Valves

Inverted key meter valves and ball meter valves include padlock wings for locking the valve in a closed position. The "W" at the end of the catalog number indicates the valve is standard with padlock wings.

Top view of the valve in the open position. Padlock holes are normally 7/16"



## Options Available

**Grip Joint** for CTS (3/4" - 2") and PEP (3/4" and 1") is available. Add "-G" to the catalog number. Example: BA63-332W-G-NL.

♦ **Quick Joint** is available by adding a "-Q" to the catalog number.

▶ **Ultra-Tite** is available. Add "-U-AWT" to the catalog number. (Consists of components assembled watertight.)

• **Ultra-Tite** is available. Add "-U" to the catalog number.

**Handles** are available for ball valves; see page 37.

Standard tee-head stops on the body to permit 90° turn *only*. **Full 360° tee-head rotation** is available. Add "R" to catalog number. Example: -332WR-NL.

**Reclaimed Water Tee-head** is available on 3/4" and 1" ball valves. Insert "RW" into the catalog number. Example: BARW63-332W-NL.

Tee-head sold only with padlock wing.