

QuickFitting® Stainless Steel push-to-connect fittings deliver a patented design, superior sealing performance, and the highest corrosion resistance in both residential and commercial installations for joining of copper, PEX (with stiffener) and CPVC. Available in larger sizes (1-1/4" – 2").

Features and Benefits

- 100% lead free, corrosion-resistant Stainless Steel
- Fast, simple push-to-connect installation
- No tools, crimping, glue or flames needed
- Safe for potable water applications
- Compatible with Copper, CPVC, & PEX
- U.S. Manufactured Grip Ring Technology
- Approved for behind the wall or direct burial (no wrap required)
- Easy removal with our patented Slip Clip™ Release Tool
- 75-Year Warranty (25-Years if Direct Burial)

Specification Data

Materials

- Body Construction: AISI 304 Stainless Steel
- O-Ring: EPDM
- Grip Ring: AISI 301 Stainless Steel
- Tube Stiffener: Glass-filled Nylon (1/2"-1") or Copper (1-1/4"-2")

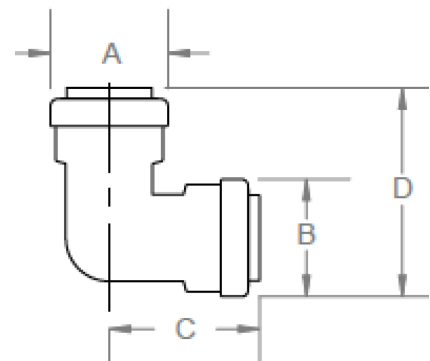
Performance

- Maximum Working Pressure: 250 psi
- Maximum Temperature: 200° F
- Applications: Indoor or outdoor plumbing, heating repair, marine repair, RV & mobile home repair, irrigation

Certifications and Listings

IAPMO listed as in compliance with the following standards:

- ASSE 1061-2015
- NSF/ANSI/CAN 61-2019
- NSF/ANSI/CAN 372-2020



Dimensional Data

Part No.	Size	A	B	C	D
SS813R	1/2"	1.06"	1.06"	1.32"	1.85"
SS823R	3/4"	1.35"	1.35"	1.73"	2.41"
SS833R	1"	1.75"	1.75"	1.88"	2.75"
SS853R	1-1/4"	2.12"	2.12"	2.7"	3.76"
SS863R	1-1/2"	2.57"	2.57"	3.05"	4.34"
SS873R	2"	2.95"	2.95"	3.42"	4.9"
SS813FR	1/2" x 1/2" FNPT	1.06"	1/2" FNPT	1.33"	1.76"
SS823FR	3/4" x 3/4" FNPT	1.35"	3/4" FNPT	1.43"	2.4"
SS813MR	1/2" x 1/2" MNPT	1.06"	1/2" MNPT	1.33"	1.81"
SS823MR	3/4" x 3/4" MNPT	1.35"	3/4" MNPT	1.43"	2.39"
SS843R	3/4" x 1/2"	1.35"	1.06"	1.49"	2.11"

Fitting Size	Insertion Depth
1/2"	1"
3/4"	1-3/16"
1"	1-3/16"
1-1/4"	1-7/8"
1-1/2"	2-1/8"
2"	2-3/16"

Item # Submitted	
Job Name	
Date	
Engineer	
Contractor	
PO #	
Tag	