

For Residential and Commercial Applications

Job Name:

Engineer/Architect:

Job Location:

Wholesaler:

Submittal Date:

Contractor:

64 Series Compression Tees

Use: For use with instrumentation, hydraulic, and pneumatic systems. Designed for use with aluminum, copper, and plastic tubing. Not intended for use with steel tubing.

* Plastic tubing requires a plastic insert and sleeve (see 60PT & 63PT submittal forms for details)

Design Features:

- **Little to no tube preparation.** Compression fittings do not require flaring, soldering or other types of tube preparation
- **Available in a broad range of sizes**

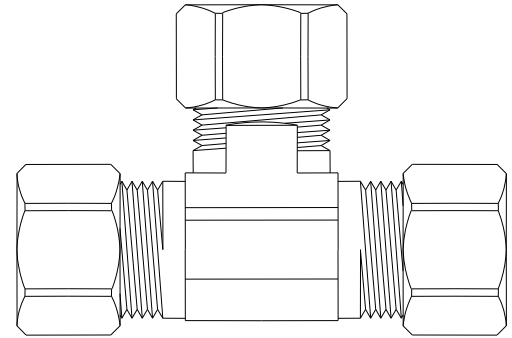


Operating Specifications:

Temperature: -65° - 250°F at maximum operating pressures

Working Pressure: See chart below

Vibration: Fair vibration resistance



WORKING PRESSURE		
PSI	Tube O.D.	Tube Wall (Inches)
400	1/8	0.030
400	3/16	0.030
300	1/4	0.030
300	5/16	0.032
200	3/8	0.032
200	1/2	0.032
150	5/8	0.035
100	3/4	0.035
75	7/8	0.035

Standard

FITTING MATERIAL SPECIFICATIONS	
Body	Brass
Compression Sleeve	Brass
Compression Nut	Brass

Low-lead

FITTING MATERIAL SPECIFICATIONS	
Body	Low-lead brass
Compression Sleeve	Brass
Compression Nut	Brass

Standard Part Listing:

- ☐ 64-2 1/8" OD tube, all three ends
- ☐ 64-2-1 B 1/8" OD tube, all three ends - body only, bulk
- ☐ 64-3 3/16" OD tube, all three ends
- ☐ 64-3-1 B 3/16" OD tube, all three ends - body only, bulk
- ☐ 64-4 1/4" OD tube, all three ends

This specification and all information contained herein is the confidential and exclusive property of Brasscraft Manufacturing Company and shall not be disclosed to others without the written consent of Brasscraft Mfg. Co. This specification must be returned to Brasscraft Mfg. Co. if requested.

300.112 64 Series Tees - Comp x Comp x Comp REV 9.19

BrassCraft

©2019 Brasscraft Manufacturing Company

64 Series Compression Tees

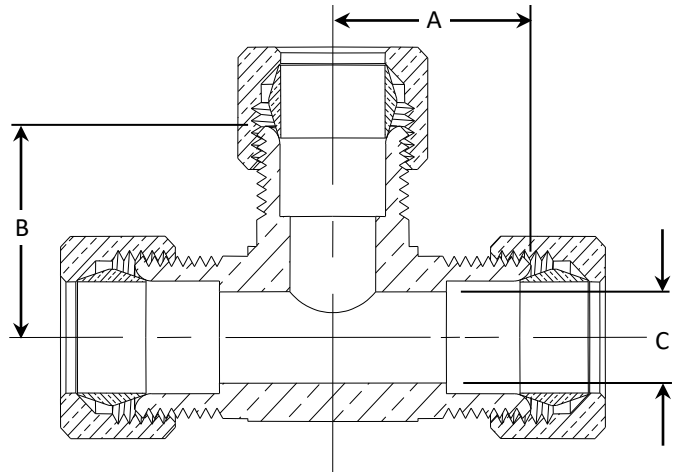
Standard Part Listing (con't):

<input type="checkbox"/>	64-4 B	1/4" OD tube, all three ends, bulk
<input type="checkbox"/>	64-4-1 B	1/4" OD tube, all three ends – body only, bulk
<input type="checkbox"/>	64-5	5/16" OD tube, all three ends
<input type="checkbox"/>	64-5-1 B	5/16" OD tube, all three ends – body only, bulk
<input type="checkbox"/>	64-6	3/8" OD tube, all three ends
<input type="checkbox"/>	64-6 B	3/8" OD tube, all three ends, bulk
<input type="checkbox"/>	64-6 C	3/8" OD tube, all three ends, chrome plated
<input type="checkbox"/>	64-6-1 B	3/8" OD tube, all three ends – body only, bulk
<input type="checkbox"/>	64-6-1 CB	3/8" OD tube, all three ends – body only, chrome plated, bulk
<input type="checkbox"/>	64-8	1/2" OD tube, all three ends
<input type="checkbox"/>	64-8 B	1/2" OD tube, all three ends, bulk
<input type="checkbox"/>	64-8 C	1/2" OD tube, all three ends, chrome plated
<input type="checkbox"/>	64-8-1 B	1/2" OD tube, all three ends – body only, bulk
<input type="checkbox"/>	64-8-1 CB	1/2" OD tube, all three ends – body only, chrome plated, bulk
<input type="checkbox"/>	64-10	5/8" OD tube, all three ends
<input type="checkbox"/>	64-10 B	5/8" OD tube, all three ends, bulk
<input type="checkbox"/>	64-10-1 B	5/8" OD tube, all three ends – body only, bulk
<input type="checkbox"/>	64-14	7/8" OD tube, all three ends
<input type="checkbox"/>	64-14 B	7/8" OD tube, all three ends, bulk
<input type="checkbox"/>	64-14-1 B	7/8" OD tube, all three ends - body only, bulk

Low-lead Part Listing:

<input type="checkbox"/>	64-4X	1/4" OD tube, all three ends
<input type="checkbox"/>	64-4-1X B	1/4" OD tube, all three ends, bulk
<input type="checkbox"/>	64-6X	3/8" OD tube, all three ends
<input type="checkbox"/>	64-6-1X B	3/8" OD tube, all three ends – body only, bulk
<input type="checkbox"/>	64-10X	5/8" OD tube, all three ends
<input type="checkbox"/>	64-10-1X B	5/8" OD tube, all three ends - body only, bulk

PART DIMENSIONS (Inches)			
Model	DIM. A	DIM. B	DIA. C
64-2	.61	.61	.094
64-3	.59	.59	.125
64-4	.60	.60	.188
64-5	.73	.73	.250
64-6	.73	.73	.312
64-8	.92	.92	.407
64-10	1.04	1.04	.500
64-12	1.24	1.24	.562



This specification and all information contained herein is the confidential and exclusive property of Brasscraft Manufacturing Company and shall not be disclosed to others without the written consent of Brasscraft Mfg. Co. This specification must be returned to Brasscraft Mfg. Co. if requested.

300.112 64 Series Tees - Comp x Comp x Comp REV 9.19

BrassCraft®

©2019 Brasscraft Manufacturing Company