

For Residential and Commercial Applications

Job Name:

Engineer/Architect:

Job Location:

Wholesaler:

Submittal Date:

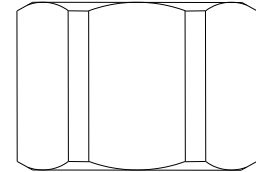
Contractor:

61CP Series Compression Caps

Use: For use with instrumentation, hydraulic, and pneumatic systems. Designed for use with aluminum, copper, and plastic tubing. Not intended for use with steel tubing.

Design Features:

- **Little to no tube preparation.** Compression fittings do not require flaring, soldering or other types of tube preparation
- **Available in a broad range of sizes**



Operating Specifications:

Temperature: -65° - 250° F at maximum operating pressures

Working Pressure: See chart below

FITTING MATERIAL SPECIFICATIONS

Compression Cap	Brass
-----------------	-------

PART DIMENSIONS (Inches)

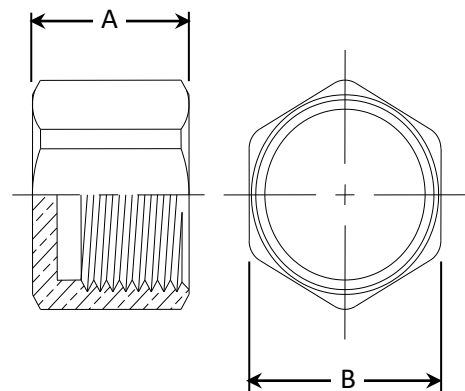
Model	DIM. A	HEX. B
61CP-4	.44	1/2
61CP-6	.51	5/8
61CP-8	.56	3/4
61CP-10	.34	.72

WORKING PRESSURE

PSI	Tube O.D.	Tube Wall (Inches)
300	1/4	0.030
200	3/8	0.032
200	1/2	0.032
150	5/8	0.035

Part Listing:

- | | | |
|--------------------------|-----------|--------------------|
| <input type="checkbox"/> | 61CP-4 | 1/4" OD tube |
| <input type="checkbox"/> | 61CP-4 B | 1/4" OD tube, bulk |
| <input type="checkbox"/> | 61CP-6 | 3/8" OD tube |
| <input type="checkbox"/> | 61CP-8 | 1/2" OD tube |
| <input type="checkbox"/> | 61CP-8 B | 1/2" OD tube, bulk |
| <input type="checkbox"/> | 61CP-10 | 5/8" OD tube |
| <input type="checkbox"/> | 61CP-10 B | 5/8" OD tube, bulk |



This specification and all information contained herein is the confidential and exclusive property of Brasscraft Manufacturing Company and shall not be disclosed to others without the written consent of Brasscraft Mfg. Co. This specification must be returned to Brasscraft Mfg. Co. if requested.

300.155 61CP Series Compression Caps REV 9.19

BrassCraft®

©2019 Brasscraft Manufacturing Company