

For Residential and Commercial Applications

Job Name:

Engineer/Architect:

Job Location:

Wholesaler:

Submittal Date:

Contractor:

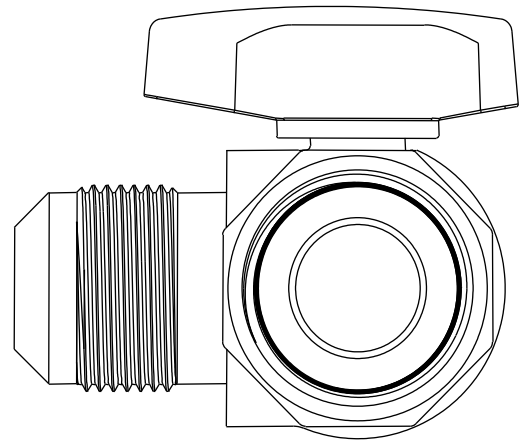
TBVA Series Angle Gas Ball Valve - Flare x Female Iron Pipe

Use: For use with natural, manufactured, mixed, liquefied-petroleum (LP) gas, and LP gas-air mixtures.

Note: The National Fuel Gas Code requires a gas shut-off valve installed upstream, within "easy reach" or 6 feet of the gas appliance

Design Features:

- **Heavy duty, forged brass body** eliminates pinhole leaks commonly associated with cast products
- **Blow-out proof stem** is assembled from the inside with double o-rings for reliable performance
- **PTFE seat rings** for longer life and consistent performance
- **Right-sized handles** ensure on/off operation even in tight installations
- **Quarter turn operation** for easy on/off flow control
- **Approved for indoor/outdoor use**
- **100% leak tested**



Operating Specifications:

Temperature: -40° - 150° F

Pressure: 5 PSI maximum

VALVE MATERIAL SPECIFICATIONS

Body	Forged brass
Retainer	Forged brass
Ball	Brass, chrome plated
Seat	PTFE
Stem	Brass
O-ring	High-temperature rubber
Handle	Aluminum
Screw	Steel, zinc plated

This specification and all information contained herein is the confidential and exclusive property of Brasscraft Manufacturing Company and shall not be disclosed to others without the written consent of Brasscraft Mfg. Co. This specification must be returned to Brasscraft Mfg. Co. if requested.

300.36 TBVA Series Angle Gas Ball Valve - Flare x FIP REV 9.19

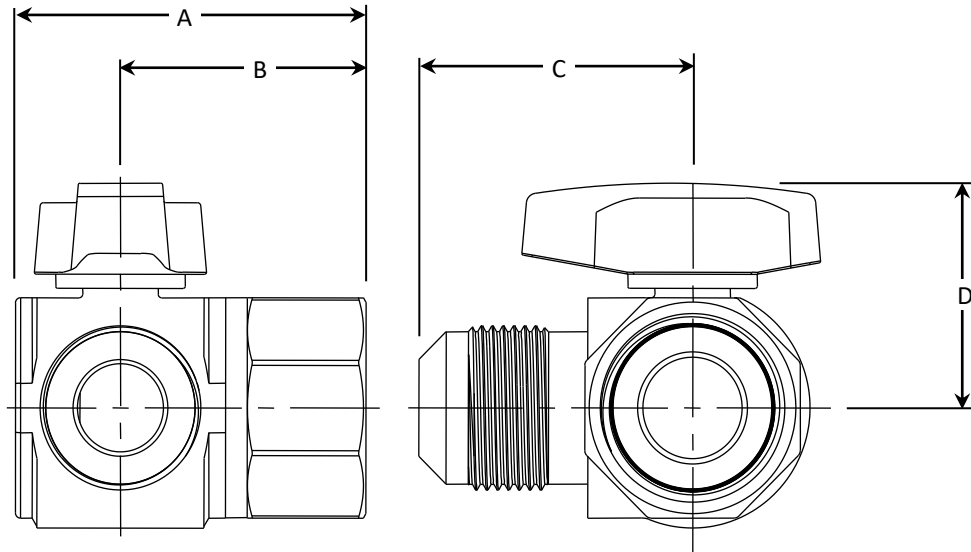
BrassCraft®

©2019 Brasscraft Manufacturing Company

TBVA Series Angle Gas Ball Valve - Flare x Female Iron Pipe

Part Listing:

<input type="checkbox"/>	TBVA6-8	3/8" OD flare x 1/2" FIP, angle
<input type="checkbox"/>	TBVA8-8	1/2" OD flare x 1/2" FIP, angle
<input type="checkbox"/>	TBVA10-12	5/8" OD flare (15/16-16 thread) x 3/4" FIP, angle



PART SPECIFICATIONS (Inches)				
Model	DIM. A	DIM. B	DIM. C	DIM. D
TBVA6-8	1.89	1.21	1.21	1.70
TBVA8-8	1.89	1.21	1.45	1.70
TBVA10-12	2.00	1.31	1.51	1.70

Country of Origin:

Made in Italy

Listings and Certifications:

- CSA listed to ANSI Z21.15 / CSA 9.1, ANSI / ASME B16.44, and CGA CR91-002



This specification and all information contained herein is the confidential and exclusive property of Brasscraft Manufacturing Company and shall not be disclosed to others without the written consent of Brasscraft Mfg. Co. This specification must be returned to Brasscraft Mfg. Co. if requested.

300.36 TBVA Series Angle Gas Ball Valve - Flare x FIP REV 9.19

BrassCraft

©2019 Brasscraft Manufacturing Company