

Job Name:	Engineer/Architect:
Job Location:	Wholesaler:
Submittal Date:	Contractor:

WB00/ WB10 7/8" OD Copper Water Heater Connectors – Female Iron Pipe x Female Iron Pipe

Use: For use in exposed locations only to connect water heaters and other water connected devices to the water supply

Design Features:

- **Galvanic corrosion resistance.** Internal dielectric sleeve effectively isolates dissimilar metals within the waterway to prevent galvanic corrosion
- **Nut provides a full thread engagement** resulting in a secure connection
-

Operating Specifications:

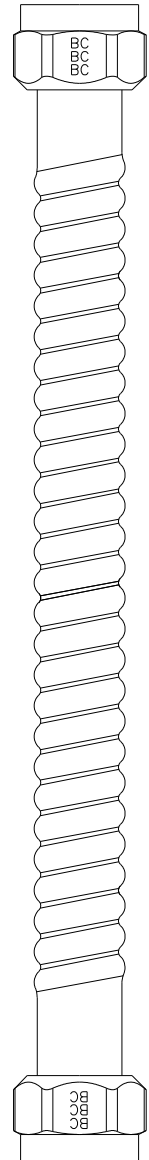
Temperature: 40° - 180° F (maximum 82° C)
Pressure: water pressures up to 125 PSI maximum



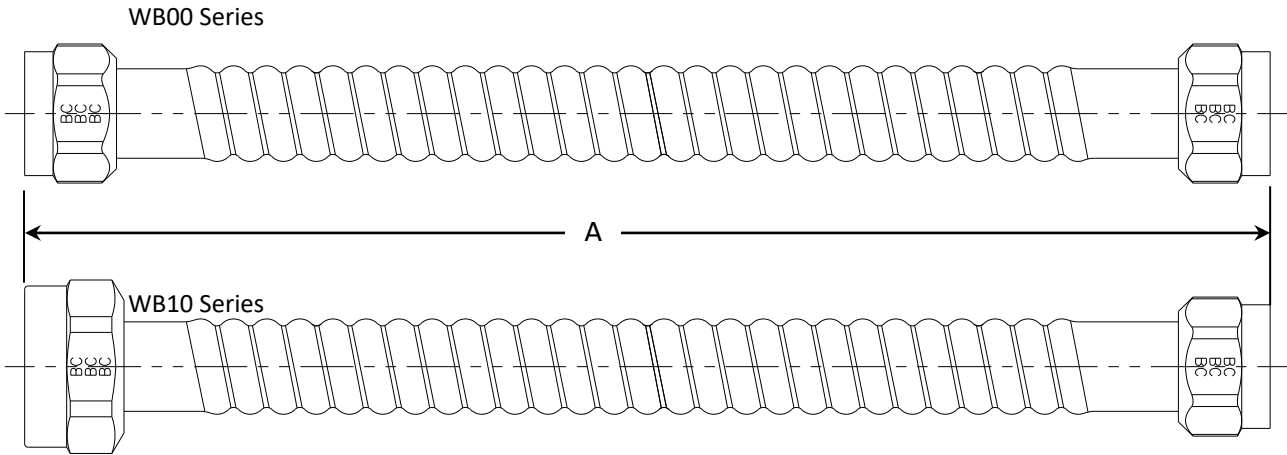
CONNECTOR MATERIAL SPECIFICATIONS	
Tubing	Copper
Dielectric Sleeve	Polypropylene
Nut	Brass
End Fitting	Brass
Washer	Rubber

Part Listing:

- | | | |
|--------------------------|----------|---|
| <input type="checkbox"/> | WB00-12N | 7/8" OD X 12" connector with 3/4" FIP x 3/4" FIP end fittings |
| <input type="checkbox"/> | WB00-15N | 7/8" OD X 15" connector with 3/4" FIP x 3/4" FIP end fittings |
| <input type="checkbox"/> | WB00-18N | 7/8" OD X 18" connector with 3/4" FIP x 3/4" FIP end fittings |
| <input type="checkbox"/> | WB00-24N | 7/8" OD X 24" connector with 3/4" FIP x 3/4" FIP end fittings |
| <input type="checkbox"/> | WB00-30N | 7/8" OD X 30" connector with 3/4" FIP x 3/4" FIP end fittings |
| <input type="checkbox"/> | WB00-36N | 7/8" OD X 36" connector with 3/4" FIP x 3/4" FIP end fittings |
| <input type="checkbox"/> | WB10-18N | 7/8" OD X 18" connector with 1" FIP x 3/4" FIP end fittings |



WB00/ WB10 7/8" OD Copper Water Heater Connectors – Female Iron Pipe x Female Iron Pipe



PART DIMENSIONS (Inches)							
Connector Length – Nut by Nut (±.31)							
Model	Dim.	12"	15"	18"	24"	30"	36"
WB00	A	12.31	15.31	18.31	24.31	30.31	36.31
WB10	A	-----	-----	18.31	-----	-----	-----

Listings & Certifications:

- IAPMO listed to ASME A112.18.6 / CSA B125.6



This specification and all information contained herein is the confidential and exclusive property of Brasscraft Manufacturing Company and shall not be disclosed to others without the written consent of Brasscraft Mfg. Co. This specification must be returned to Brasscraft Mfg. Co. if requested.