



"Mastar® and Centurion®" Series Regulators

FOR U.S. JOBS
UNIWELD EMPLOYS OVER 300 WORKERS



Centurion®

RO100

The economical, lightweight Centurion® Series Regulators feature rugged brass bodies. 1.5" gauges and protective rubber gauge boots.

GAUGES WITH PROTECTIVE RUBBER BOOTS



Mastar®

RSMC2

Uniweild's top-of-the-line, single stage Mastar® Series Regulators have two 1.5" gauges, a 3" pressure adjusting "T" handle and protective rubber gauge boots. Listed

		Part#	UPC#	CGA Inlet	Outlet Connection	Delivery 1 1/2" Gauges/Contents	Delivery PSI
Centurion®	Oxygen	R0100	14100	540	"A" RH	[G49D] 100/4000 [G56D]	2-60
	Acetylene	RMC100	14102	200	"A" LH	[G15D] 30/Contents [G19D]	2-15
Mastar®	Oxygen	RSO	12100	540	"A" RH	[G49D] 100/4000 [G56D]	2-60
		RSOB	12101	540	"B" RH	[G49D] 100/4000 [G56D]	2-60
		12106	12106	540	"A" RH	[psi/kg] [G85-1D] 100/4000 [G82-1D]	2-60
	Acetylene	RSMC2	12102	200	"A" LH	[G15D] 30/Contents [G19D]	2-15
		RSMC2B	12103	200	"B" LH	[G15D] 30/Contents [G19D]	2-15
		RSB2	12104	520	"A" LH	[G15D] 30/Contents [G19D]	2-15
		RSB2B	12105	520	"B" LH	[G15D] 30/Contents [G19D]	2-15
12107	12107	520	"A" LH	[psi/kg] [G79-1D] 30/400 [G73-1D]	2-15		

All regulators with "A" [3/8" - 24] outlet fittings are available with "B" [1/16" - 18] outlet fittings. To order, add "B" to the Part Number. Pressure relief devices are not designed to protect downstream equipment.

Replacement Gauges

1 1/2" Gauges [1/8" NPT] with Protective Rubber Boots



G49D

Oxygen	
G49D	100 psi, Steel Case
G56D	4000 psi, Steel Case

Acetylene	
G15D	30 psi, Steel Case, Red Line 15-30 psi
G19D	1/4, 1/2, 3/4, Full [Contents] Steel Case, [400 psi Max]



G19D

GB155 Protective Rubber Boot for all 1 1/2" Gauges [Pkg. of 2]

Gauge Part Numbers without D are individually boxed. Gauge Part Numbers with D denote hanging display packaging [D=pkg]. For complete replacement welding gauge information, refer to page 99.



Uniweild Products, Inc. Fort Lauderdale, FL 33312 U.S.A. Customer Service: 800.323.2111 info@uniweild.com • www.uniweild.com



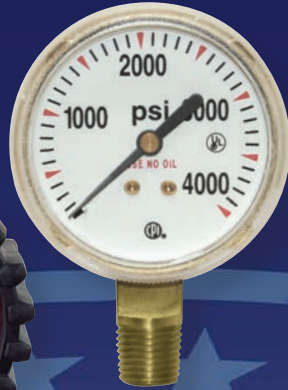
Replacement Gauges/Lenses/Boots

Welding Gauges

FOR U.S. JOBS
UNIWELD EMPLOYS OVER 300 WORKERS



G15D



PSI Only



**PSI/Kg
Add (-1)
to Part#**



**PSI/kPa
Add (-2)
to Part#**



**PSI/Bar
Add (-3)
to Part#**

**1 1/2" GAUGES
[1/8" NPT]**

**2" GAUGES
[1/4" NPT**]**

**2 1/2" GAUGES
[1/4" NPT**]**

Pressure Calibration

Powder Painted Steel Case B.M.

Gold Steel Case B.M.

Gold Steel Case C.B.M.

Brass Case B.M.

Brass Case C.B.M.
WITH WEEP HOLE

Gold Steel Case B.M.

Brass Case B.M.

Gold Steel Case B.M.

15 PSI	-	G20D [BLUE]	-	-	-	-	-	-
30 PSI [Red Line 15-30]	G15D* (Red)	G79D*	-	G2D	-	G2SD	G22D	G22SD
30 PSI	-	G80D*	-	G74D	-	G74SD	G75D	G75SD
60 PSI	-	G83D*	-	G5D	G105	G5SD	G25D	G25SD
100 PSI	G49D* (Green)	G85D*	G185	G6D	G106	G6SD	G26D	G26SD
200 PSI	-	G78D*	G178	G4D	G104	G4SD	G24D	G24SD
300 PSI	-	G84D*	G184	G33D	-	G33SD	-	-
400 PSI	-	G73D*	-	G1D	G101	G1SD	G21D	G21SD
1/4, 1/2, 3/4 CONTENTS	G19D* (Red)	-	-	-	-	-	-	-
600 PSI	-	-	-	G8D	G108	G8SD	G28D	G28SD
1000 PSI	-	-	-	G34D	-	G34SD	-	-
4000 PSI, UL LISTED	G56D* (Green)	G82D*	G182	G7D	-	G7SD	G27D	G27SD
6000 PSI, UL LISTED	-	-	-	G44D	-	G44SD	G46D	G46SD

B.M. = Bottom Mount. C.B.M. = Center Back Mount. * With Gauge Boot.
** For 1/8" NPT add [-4] to Part Number.



1 1/2" Gauge Boot Set Black

GB15S

Replacement Lenses



**GB20S
2" Gauge Boot Set Black**

	Part#	1 1/2" Description	Part#	2" Description	Part#	2 1/2" Description
DISPLAY CARD	PL15	Posi-Lock	PL2	Posi-Lock	PL25	Posi-Lock
BULK	05-1-52	Flat Plastic	05-2-52-4	Flat Plastic	05-3-52-8	Posi-Lock
	05-1-52-7	Posi-Lock	05-2-52-7	Posi-Lock		
	05-1-63	Friction Ring	05-2-63-2	Friction Ring		



Uniweild Products, Inc. Fort Lauderdale, FL 33312 U.S.A. Customer Service: 800.323.2111
info@uniweild.com • www.uniweild.com

97

9 Gauges