

## For Residential and Commercial Applications

Job Name:

Engineer/Architect:

Job Location:

Wholesaler:

Submittal Date:


Contractor:

### 69 Series Compression x Male Iron Pipe Elbows

**Use:** For use with potable and non-potable water, instrumentation, hydraulic, and pneumatic systems. Designed for use with aluminum, copper, and plastic tubing\*. Not intended for use with steel tubing.

\* Plastic tubing requires a plastic insert and a sleeve (see 60PT & 63PT submittal forms for details)

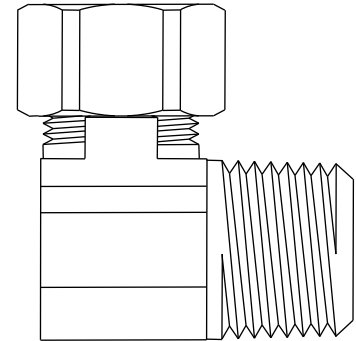
#### Design Features:

- **Little to no tube preparation.** Compression fittings do not require flaring, soldering, or other types of tube preparation
- **Available in a broad range of sizes**
- 

#### Operating Specifications:

**Temperature:** -65° - 250°F at maximum operating temperatures

**Working Pressure:** See chart below



WORKING PRESSURE		
PSI	Tube OD	Tube Wall (Inches)
400	1/8	0.030
300	1/4	0.030
200	3/8	0.032
200	1/2	0.032

FITTING MATERIAL SPECIFICATIONS	
<b>Body</b>	Brass
<b>Compression Sleeve</b>	Brass
<b>Compression Nut</b>	Brass
<b>Option</b>	Plating

#### Part Listing:

<input type="checkbox"/>	69-2-2X	1/8" OD tube x 1/8" MIP
<input type="checkbox"/>	69-2-2-1X B	1/8" OD tube x 1/8" MIP - body only, bulk
<input type="checkbox"/>	69-4-4X	1/4" OD tube x 1/4" MIP
<input type="checkbox"/>	69-4-4-1X B	1/4" OD tube x 1/4" MIP - body only, bulk
<input type="checkbox"/>	69-6-6X	3/8" OD tube x 3/8" MIP
<input type="checkbox"/>	69-6-6X B	3/8" OD tube x 3/8" MIP, bulk
<input type="checkbox"/>	69-6-6X C	3/8" OD tube x 3/8" MIP, chrome plated
<input type="checkbox"/>	69-6-6X CB	3/8" OD tube x 3/8" MIP, chrome plated, bulk
<input type="checkbox"/>	69-6-6X CD	3/8" OD tube x 3/8" MIP, chrome plated, carded
<input type="checkbox"/>	69-6-6-1X B	3/8" OD tube x 3/8" MIP - body only, bulk
<input type="checkbox"/>	69-6-6-1X CB	3/8" OD tube x 3/8" MIP - body only, chrome plated, bulk

*This specification and all information contained herein is the confidential and exclusive property of Brasscraft Manufacturing Company and shall not be disclosed to others without the written consent of Brasscraft Mfg. Co. This specification must be returned to Brasscraft Mfg. Co. if requested.*

300.243 69 Series Elbows - Comp x MIP REV 9.19

**BrassCraft®**

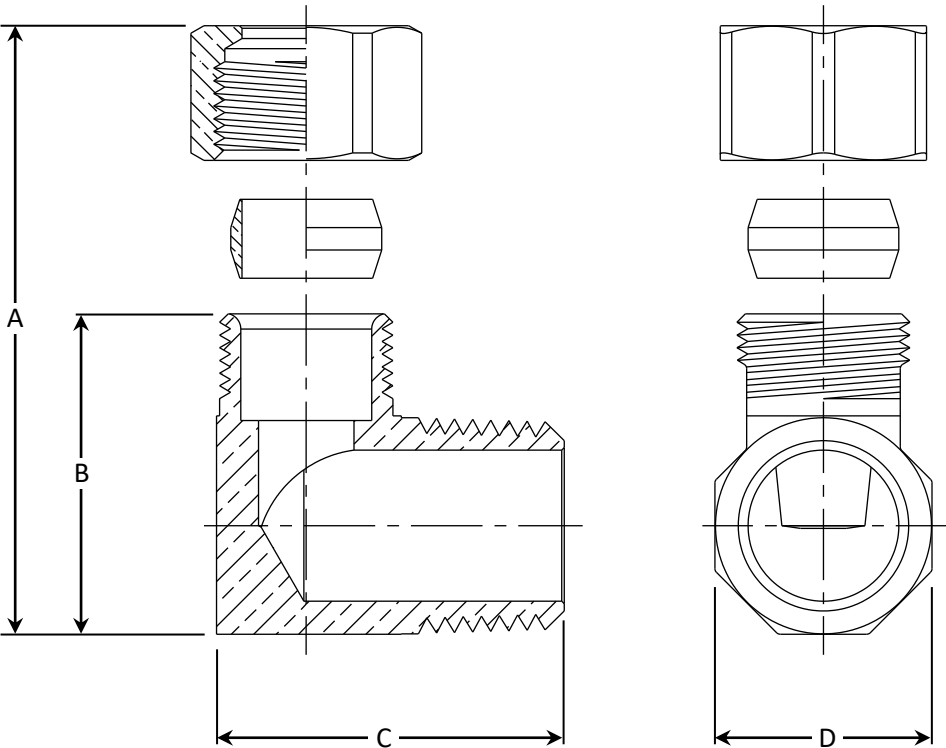
©2019 Brasscraft Manufacturing Company

69 Series    Compression x Male Iron Pipe Elbows

Part Listing (con't):

- ☐ 69-8-8X            1/2" OD tube x 1/2" MIP
- ☐ 69-8-8X C        1/2" OD tube x 1/2" MIP, chrome plated
- ☐ 69-8-8-1X B      1/2" OD tube x 1/2" MIP - body only, bulk

PART DIMENSIONS (Inches)				
Model	DIM. A	DIM. B	DIM. C	DIM. D
69-2-2X	.95	0.74	0.78	.46
69-4-4X	1.22	0.94	1.13	.58
69-6-6X	1.34	1.07	1.13	.69
69-8-8X	1.50	1.17	1.37	.82



*This specification and all information contained herein is the confidential and exclusive property of Brasscraft Manufacturing Company and shall not be disclosed to others without the written consent of Brasscraft Mfg. Co. This specification must be returned to Brasscraft Mfg. Co. if requested.*